



Rabbit anti CD253/TRAIL (CT) Polyclonal Antibody

Alternative Name(s): TNFSF10; APO2L

Order Information

- **Description:** CD253/TRAIL (CT)
- **Catalogue:** 600-950
- **Lot:** See label
- **Size:** 100ug/200ul
- **Host:** Rabbit
- **Clone:** nan
- **Application:** IHC(P), WB
- **Reactivity:** Hu

ANTIGEN PREPARATION

A synthetic peptide corresponding to the C-terminus of TRAIL protein (from 230aa-280aa). This sequence is identical to human, rat and mouse

BACKGROUND

The TRAIL(TNF related apoptosis induced ligand) or Apo 2L /CD253 protein encoded by this gene is a cytokine that belongs to the tumor necrosis factor (TNF) ligand family. The ligand binding to its receptors DR4/DR5 initiates apoptosis of tumor cells. TRAIL is expressed predominantly in spleen, lung, and prostate but also in many other tissues. TRAIL is a type II membrane protein from the TNF family. The human form of the protein is 281 amino acids in length, whereas the murine form is 291 amino acids. The two forms share 65% identity. TRAIL protein preferentially induces apoptosis in transformed and tumor cells, but does not appear to kill normal cells although it is expressed at a significant level in most normal tissues. This protein binds to several members of TNF receptor superfamily including TNFRSF10A/TRAILR1, TNFRSF10B/TRAILR2, TNFRSF10C/TRAILR3, TNFRSF10D/TRAILR4. The activity of this protein may be modulated by binding to the decoy receptors TNFRSF10C/TRAILR3, TNFRSF10D/TRAILR4, and TNFRSF11B/OPG that cannot induce apoptosis. The binding of this protein to its receptors has been shown to trigger the activation of MAPK8/JNK, caspase 8, and caspase 3.

PURIFICATION

The Rabbit IgG is purified by Epitope Affinity Purification

FORMULATION

This affinity purified antibody is supplied in sterile Phosphatebuffered saline (pH7.2) containing antibody stabilizer

SPECIFICITY

This antibody recognizes ~34 kDa of TRAIL protein. It cross-reacts to human, mouse and rat species.

STORAGE

The antibodies are stable for 24 months from date of receipt when stored at -20oC to -70oC. The antibodies can be stored at 2oC-8oC for three month without detectable loss of activity. Avoid repeated freezing-thawing cycles.

APPLICATIONS/SUGGESTED WORKING DILUTIONS*

- Western Blot: 0.1-1 µg/ml
- ELISA: 0.01-0.1 µg/ml
- Immunoprecipitation: 2-5 µg/ml
- IHC: 2-10 µg/ml
- Flow cytometry: Not tested
- Molecular Weight: 34.0
- Positive Control: Kidney Tissue
- Cellular Location: Cell Membrane

FOR RESEARCH USE ONLY.

AbboMax, Inc 2528 Qume Drive, Suite 8, San Jose, California 95131, USA
1 408-573-1898 (Tel). 1 408-573-1858 (Fax). www.abbomax.com info@abbomax.com

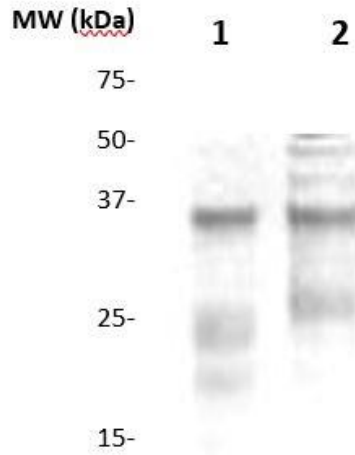


*Optimal dilutions should be determined by researchers for the specific applications.

FOR RESEARCH USE ONLY.

AbboMax, Inc 2528 Qume Drive, Suite 8, San Jose, California 95131, USA
1 408-573-1898 (Tel). 1 408-573-1858 (Fax). www.abbomax.com info@abbomax.com

DATA ATTACHMENTS



Western Blot: The cell lysate derived from Raji (lane 1) and mouse spleen (Lane 2) were separated in 10% SDS-PAGE, transferred onto NC membrane, and immunoblotted by Rabbit anti CD253/TRAIL (IN1) (Cat#600-950) at 1:500. An immunoreactive major band was observed at ~34 kDa.

REFERENCES

FOR RESEARCH USE ONLY.